



Trekker

TECHNICAL NETWORK LEADERSHIP

50 CC CDI

Datasheet

Reference : 754678

GENERAL CHARACTERISTICS

SPECIFICATIONS :

Company name : Trekker and Trekker R  
Mines type \*\* : S1A variant A and B  
(\* official French body responsible for regulating weights and measures and changes made to motor vehicles)

DIMENSIONS (in mm) :

Length : 1760  
Width : 670  
Height (without rear-view mirrors) : 1110  
Ground clearance : 125  
Wheel base : 1250

WEIGHT (in kg) :

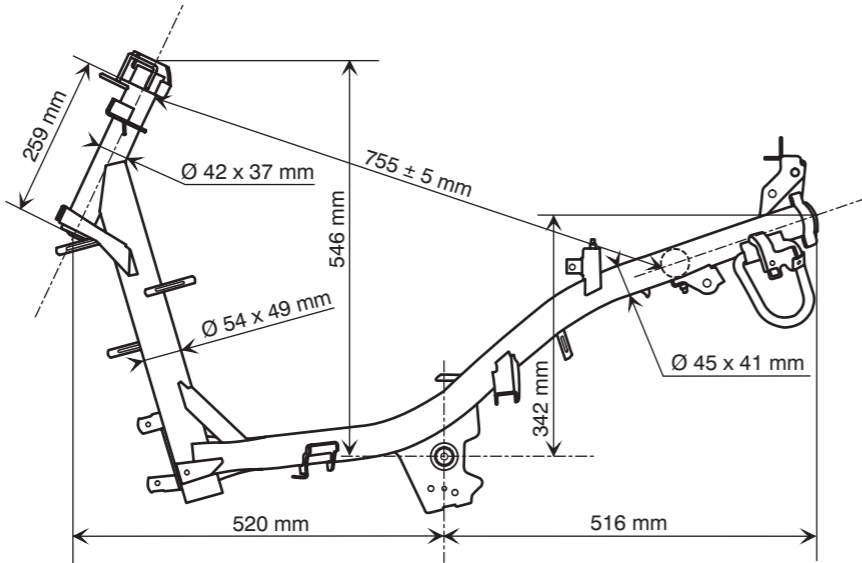
Laden weight : 88

STEERING :

Steering column mounted with ball-bearing cone and cup.

CAPACITIES (in litres) and RECOMMENDATIONS :

Fuel tank (including reserve) : 6 : super unleaded petrol (95 or 98) only  
Oil sump : 1,3 : semi-synthetic or synthetic for two-stroke engines with separate oiling. Complies with API TC or JASO FC standards  
Crankcase : \*  
Cooling system : \*  
Relay box : 0,12 . SAE 80W90  
Fork : 0,09 per tube (variant B) (ESSO UNIVIS 46 or AGIP H LIFT 46)  
Braking circuit : DOT 3 or DOT 4



\* : not completed -

LUBRICATION :

Separate lubrication by piston pump, either variable delivery synchronised with the throttle grip, or constant delivery (depending on model). Driven by hobbled pinion on the right shank of the crankshaft. The oil is injected directly into the carburettor.

COOLING :

By air circulation forced by a turbine fixed on the rotor of the flywheel magneto.

ENGINE :

2-stroke single-cylinder  
Direct intake via reed valve into the crankcase.  
Scavenging by 5 transfers  
Cylinder capacity : 49,1 cm³  
Bore 1 shore : 40 x 39,1  
Max power : 3,5 KW  
Max power rating : 7000 to 7200 rpm  
Max torque rating : 6600 to 6900 rpm

TRANSMISSION :

By variable pulleys and V-type belt. 6-roller type drive pulley mounted on the left shank of the crankshaft. Fixed flange of the pulley equipped with cooling fins to cool the belt.  
Driven/centrifugal 3-block lined clutch pulley mounted on the end of the relay box input shaft.

RELAY BOX :

By shaft and pinions. Double set of pinions

- 1<sup>st</sup> gear teeth set : helical
- 2<sup>nd</sup> gear teeth set : straight

SUSPENSION :

Front suspension type : inverted telescopic fork (variant A)  
hydraulic telescopic fork (variant B)  
Travel : 73 mm  
Rear suspension type : combined hydraulic spring-schok absorber  
Travel : 63 mm

FRONT BRAKE :

Single disc type, hydraulic control.  
Diameter of the brake piston : 30 mm  
Disc diameter and thickness : 190 - 3,5 mm  
Min thickness : 3 mm  
Diameter of the master-cylinder : 11 mm

REAR BRAKE :

Single cam drum type controlled by cable.  
Brake drum diameter : 110 mm  
Brake lining thickness : 4 mm

WHEELS AND TYRES :

Integral aluminium wheels an tubeless tyres.

	Front	Rear
Rim dimensions (A) :	3'' x 10''	3,5'' x 10''
Rim dimensions (B) :	3'' x 12''	3,5'' x 12''
Tyres dimensions (A) :	120/90 - 10	130/90 - 10
Tyres dimensions (B) :	120/70 - 12	130/70 - 12
Pressures (bar) :	1,3	1,6
Max wheel disc :	0,8 mm	0,8 mm
Balance :	*	*

TIGHTENING TORQUES (Nm) :

ENGINE :

Cylinder head : 12 to 15  
Exhaust mounting on the cylinder : 15 to 18  
Crankcase : 8 to 12  
Spark plug : 20

CYCLE PART :

Engine mounting on connecting rod : 57 to 70  
Front wheel : 60 to 70  
Upper nut on the steering column : 70 to 80  
Rear wheel : 100 to 120  
Shock-absorber mounting. rear, upper : 43 to 50  
Inner : 20 to 25  
Front brake calliper : 25 to 35  
Front brake disc : 27 to 32

ADJUSTEMENTS AND CHECKS :

CYLINDER / PISTON :

Ring gap clearance.  
Upper : 0,2 to 0,35 mm  
Lower : 0,2 to 0,35 mm

CONNECTING ROD / CRANKSHAFT :

Crankshaft run-out : 0,12 mm

CARBURATION :

Carburettor.  
Make : type : GURTNER PA  
Adjustment n° : 370 (A) 360 (B)  
Main jet : 72  
Idle jet : 42  
Needle (type and adjustment step) : L3035 H first notch  
Starter jet : 45  
Mixture screw : 1 rev 1/8 (A) 1 rev 1/4 (B)  
Idle adjustment : 1600 rpm ± 100  
CO² % adjustment : \*

IGNITION :

- Ignition unit : CDI
- Spark plug : NGK BR7HS or EYQUEM R850
- Electrode gap : 0,6 to 0,7 mm
- Ignition advance : variable
- Ignition coil : TEC MP11 or T11C X7A
- Primary winding resistance : 0,26Ω ± 20%
- Secondary winding resistance : 3KΩ ± 20%
- Spark plug cap resistance : 5KΩ ± 10%
- Pick-up resistance : 120Ω ± 10%

ELECTRICAL EQUIPMENT :

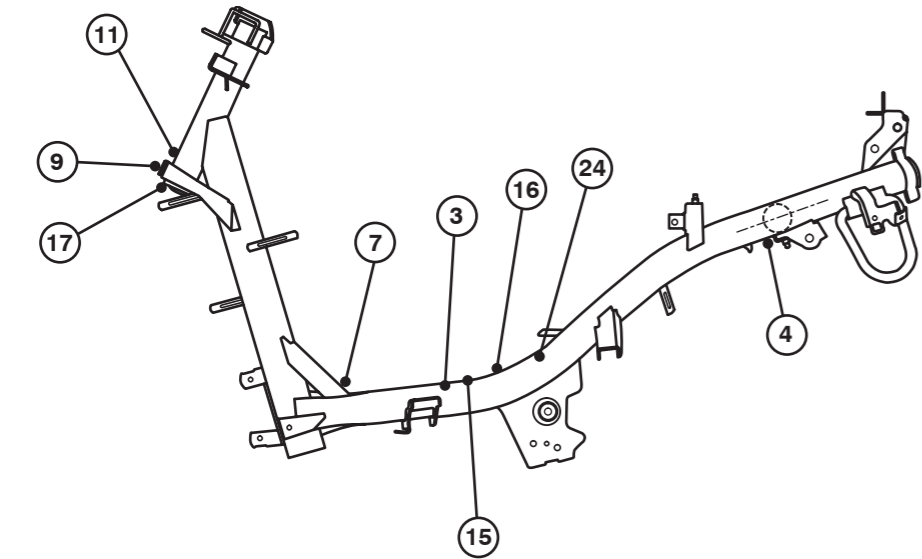
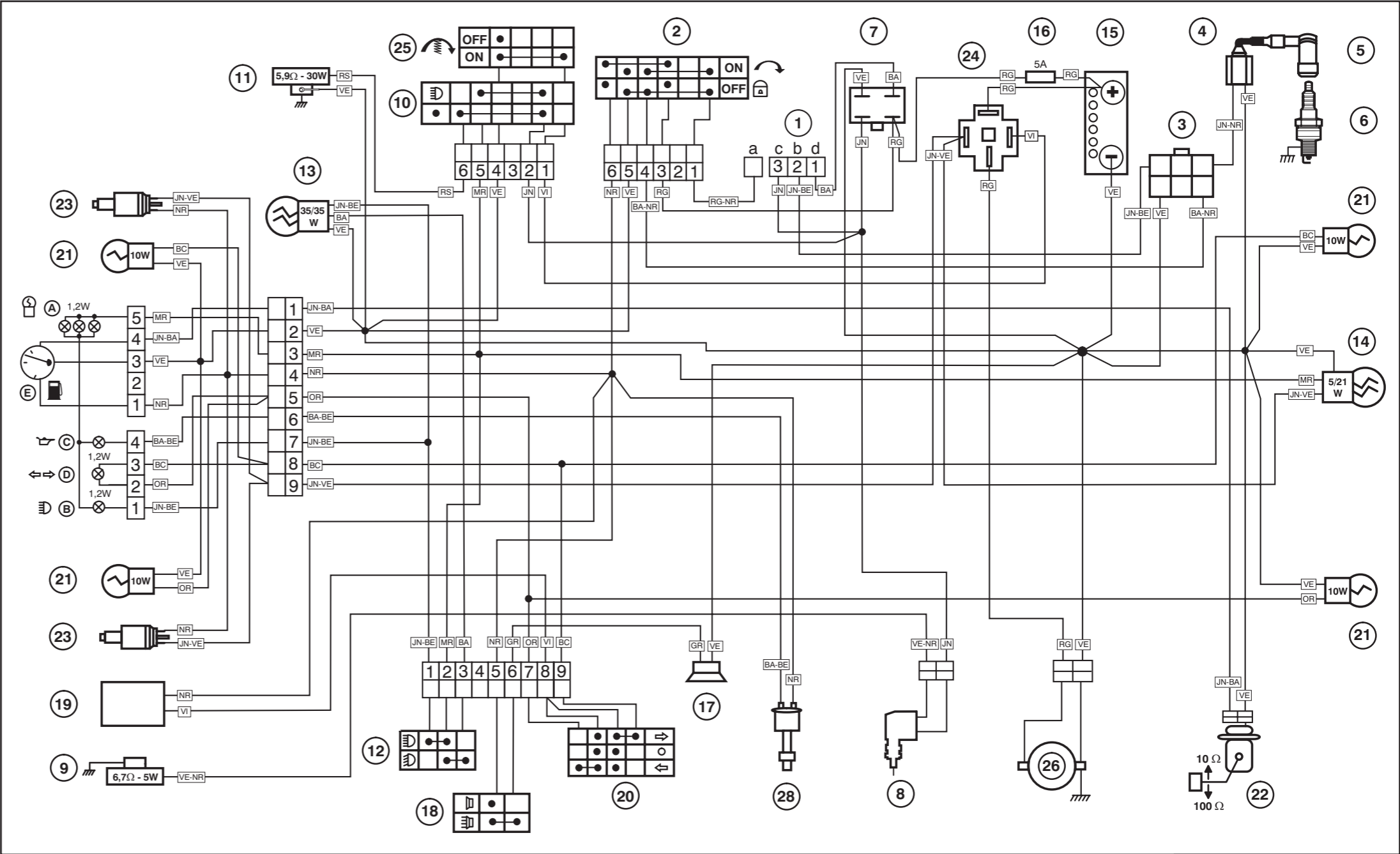
- Current generator (type and power) : GF4 - 276 - 55W
- Make : MITSUBA
- Stator resistance : yellow wire 0,6Ω ± 25% - white wire 0,7Ω ± 25%
- Battery regulation voltage : 14,5 ± 0,5V
- Battery (type and capacity) : YB4 LB 12V 4Ah
- Battery (type and capacity) : current regulation at : 13,1 ± 0,5V

STARTER :

- Power and type : 150W SM 10254
- Make : MITSUBA

LIGHTING AND FUSES :

Headlamp (code light) :	1	12V - 35/35W
Rear stop lamp :	1	12V - 21/5W
Indicator lamps :	4	12V - 10W
Number plate lightning :	*	*
Dash board lighting :	3	12V - 1,2W
Instrument panel indicator lamps :	3	12V - 1,2W
Main fuse :	1	5A
Signalling fuse :	*	*
“Side light” bulb :	*	*



- A Instrument panel lightning

B Main beam control

C Oil level warning light

D Indicator control light

E Fuel gauge

F LED “Anti-theft device”

G Temperature gauge

H Warning light “Reserve”

J Oil-pressure warning light
- 1) Generator

a : Ignition coil (inner)

b : Pickup

c : Alternating current

d : Battery charge current
- 2) Ignition switch

3) CDI Unit

4) Ignition coil (high voltage)

5) Spark plug socket (resistive) 5 KΩ

6) Spark plug (resistive) 5 KΩ
- 7) Regulator - rectifier

(A): Regulator AC

(B): (Regulator) - rectifier DC

8) Automatic choke

9) Resistor (in line with choke)

6,7 Ω - 5 W

10) Light switch

11) Resistor (parallel to lightning)

5,9 Ω - 30 W

12) Dip switch (main / low headlight)

13) Headlight

14) Stop- / tail-light

15) Battery

16) Fuse

17) Horn

18) Horn switch

19) Indicator relay

20) Indicator switch

21) Indicator bulb

22) Fuel gauge pickup
- 23) Stop light switch

24) Starter relay

25) Starter switch

26) Starter motor

27) Current limiter

28) Oil level switch

29) Temperature sensor

30) Immobilizer

31) Antenna for anti-theft device

32) “Side light” bulb

33) Number plate light

34) Lateral stand switch

35) Emergency switch (ignition)

36) “Neutral” switch (gearbox)

37) Oil pressure switch

38) Cooling fan

39) Thermo-switch cooling fan

40) Electrical carburettor heating

41) Power supply unit

42) Switch “Reserve”

- BA :

BA-BE :

BA-NR :

BC :

BE :

GR :

JN :

JN-BA :

JN-VE :

JN-NR :

JN-VE :

MR :

NR :

OR :

RG :

RG-NR :

RS :

VE :

VE-NR :

VI :
- White

White/Blue

White/Black

Light Blue

Blue

Grey

Yellow

Yellow/White

Yellow/Green

Yellow/Black

Yellow/Green

Brown

Black

Orange

Red

Red/Black

Pink

Green

Green/Black

Purple